

## 1 Congratulations! ... Nice Choice!

You are now the owner of a Bertucci® Performance Field Watch.™ You have something special because every Bertucci® Watch has been carefully designed, made from only the best materials, and loaded with premium features. Additionally, Bertucci® Watches are backed up with an industry leading 3 year warranty. This is the basis for our Promise of Performance™ to you. Please carefully read this manual to familiarize yourself with your new Bertucci® Watch. Please contact us with any questions you may have. Contact information is in section 15.

Thank You!

### Our Story – Your Watch:

Our story is simple... It's about building a better watch. It's a Promise of Performance™ to you that is derived from a belief that innovative design and attention to detail matter. It is this focus, passion, and integrity that drive us in the watches we make for you.

If you were to own only one watch... it would be a watch well suited for your life's endeavors. It would need to possess the qualities of durability, singularity of purpose, and versatility. Designed to balance form and function, to be equally rugged and refined, with a classic, understated, enduring style... distinctly a Bertucci® Field Watch™. Ready to survive the day to day challenges that come your way... wherever they may be.

\*Manufactured using one of more of the following U.S. Pat. No: 488388, 488075, 488724, 582296, 609586, 645766, 7832605, 8,960,510,B2 and other patents pending.

## 2 Durability by Design®

Rugged U.S. Patented Unibody™ case for extreme durability and comfort

Hardened, scratch resistant crystals

Premium precision & reliable all-metal quartz movements

Equipped with U.S. Patented long lasting high performance band

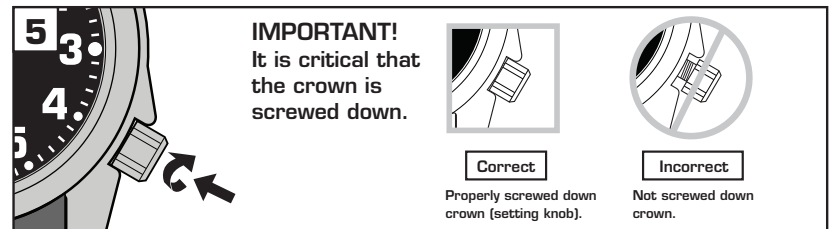
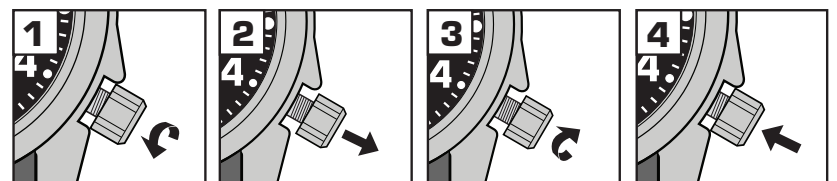


## 3 TITANIUM & STAINLESS STEEL CASES A-1S, A-2S, M-1S, A-1T, A-2T, A-3T, A-4T, M-1T, B-1T, C-1T, D-1T

### Screw Down Crown Setting Instructions:

(Note: A red crown clip may be on setting crown - please carefully remove.)

- 1 Turn crown counter clock-wise to unscrew (see fig.1 to the right). The crown is completely unscrewed when it turns freely. (Note: If crown is already in the out position or unscrewed, with second hand stopped, go to step 2.)
- 2 Gently and carefully pull crown out to stop second hand. Do not pull too hard (fig. 2).
- 3 Rotate the crown clock-wise advancing the hour and minute hands to set the desired time (fig. 3).
- 4 Push crown in to re-start second hand (fig. 4).
- 5 Push in again and turn crown clock-wise to engage threads. Continue to turn clockwise to firmly screw / re-thread down crown. (A screwed down crown will prevent water damage to the movement.) Do not overtighten (fig. 5).

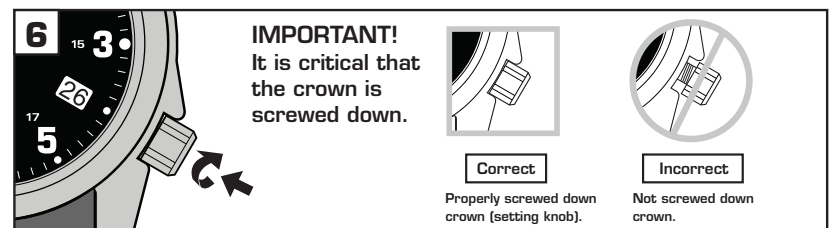
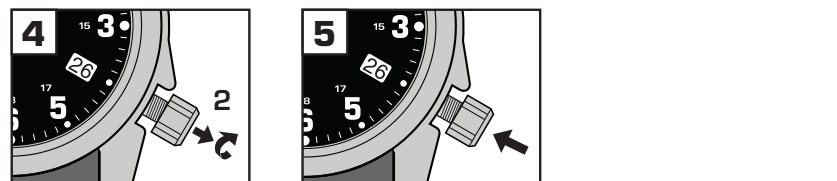
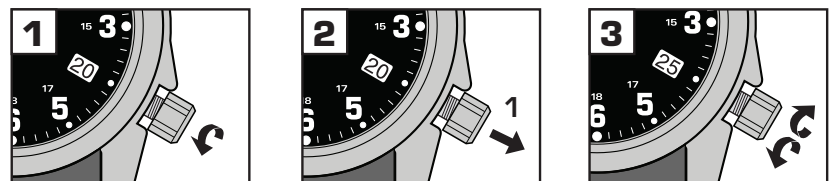


## 4 TITANIUM & STAINLESS STEEL CASES M-1S, A-2T, A-4T

### Screw Down Crown Setting Instructions: w/ DATE

(Note: A red crown clip may be on setting crown - please carefully remove.)

- 1 Turn crown counter clock-wise to unscrew (see fig. 1 to the right). The crown is completely unscrewed when it turns freely. (Note: If crown is already in the out position or unscrewed, with second hand stopped, go to step 2.)
- 2 Gently and carefully pull crown to 1st position. You will feel a "click" (fig. 2). Do not pull too hard.
- 3 Turn crown clock-wise or counter clock-wise (depending on the model) to advance the date... continue to advance the date to yesterday's date (fig. 3).
- 4 Carefully pull the crown out further to 2nd position for a second "click." Rotate the crown clock-wise to advance the time past midnight and you will see the date advance to today's date. Continue to advance to set the desired time. This will ensure the AM/PM is correct (fig. 4). Note: Date will need to be reset for months not ending with 31 days.
- 5 Push crown in to re-start second hand (fig. 5).
- 6 Push in again and turn crown clock-wise to engage threads. Continue to turn clockwise to firmly screw / re-thread down crown. (A screwed down crown will prevent water damage to the movement.) Do not overtighten (fig. 6).



## 5 FIBER REINFORCED POLY-RESIN / POLYCARBONATE CASES A-2R, A-3P

### Push In Crown Setting Instructions:

(Note: A red crown clip may be on setting crown - please carefully remove.)

- 1 Gently and carefully pull crown out to stop second hand. (Note: If crown is already in the out position, with second hand stopped, go to step 2.)
- 2 Gently and carefully pull crown out to stop second hand. Do not pull too hard.
- 3 Turn crown clock-wise or counter clock-wise, moving hour and minute hands, to set to the desired time.
- 4 Push crown in to re-start second hand.

## 6 FIBER REINFORCED POLY-RESIN / POLYCARBONATE CASES A-5P

### Push In Crown Setting Instructions: w/ DATE

(Note: A red crown clip may be on setting crown - please carefully remove.)

- 1 Gently and carefully pull crown out to stop second hand. (Note: If crown is already in the out position, with second hand stopped, go to step 2.)
- 2 Gently and carefully pull crown halfway out. You will feel a "click". Do not pull too hard. (See section 4 step 2).
- 3 Turn crown clock-wise or counter clock-wise (depending on the model) to advance the date, continue to advance the date to yesterday's date. (See section 4, step 3).
- 4 Carefully pull the crown out a bit further for a second "click". Turn the crown clock-wise to cycle the time past midnight, you will see the date advance to today's date. Continue to advance to set the desired time, this will ensure the AM/PM is correct (See section 4 step 4).
- 5 Push crown in to re-start second hand.

Note: Case back is engraved with the case type

## 6 Water Resistance:

Your Bertucci® Watch has been carefully designed and tested to be used in water. 86 P.S.I.A., 160 P.S.I.A., or 320 P.S.I.A. (equals immersion to 50 meters/164 feet, 100 meters/328 feet or 200 meters/656 feet below sea level) if crown is pushed in or screwed down. See case back and/or dial for the water resistance of your watch.

1. Never adjust crown (setting knob) when watch is wet or submerged in water.
2. Never wear the watch unless the crown is completely screwed down or pushed in.
3. The watch is water resistant only as long as crystal, crown and case are intact and undamaged.
4. Your Bertucci® Watch has been designed to be worn during activities in which the watch will be exposed to water and submersion in water. However, the watch is not a professional diver watch and should not be used for diving.

## 8 Care for your Bertucci® Watch:

1. Never wear your watch unless the crown (setting knob) is completely screwed down or pushed in.
2. We recommend rinsing your watch and band with fresh water after exposure to salt water, chlorinated water, chemicals, soil loads or dust.
3. Never adjust crown when watch is wet or submerged in water.
4. Keep watch clean and free of debris. Use mild hand dish soap & warm water with a soft brush to clean. Note: Keep setting crown screwed down or pushed in.
5. Replace band if excessively worn, see Replacement Bands in section 7.
6. If watch has stopped, bring it to a local professional jeweler for battery replacement or contact us for battery replacement service. See Battery Information in section 10.
7. Do not expose your watch to intense magnetic fields and vibration such as loudspeakers and other electromagnetic devices.
8. When setting your watch, handle the crown gently as this is a precision device.
9. Do not subject your watch to severe impact, avoid dropping.
10. If watch is not in use for an extended time period, unscrew and/or pull crown out, stopping second hand, to conserve battery life.

## 9 Warranty:

Every Bertucci® Watch is carefully designed, manufactured and inspected to ensure it meets our Promise of Performance™ to you. This is backed up by a 3 year warranty. In the event of a malfunction, please follow these steps.



- Step 1** Determine whether your watch is in warranty. If your watch is in warranty, please follow the remaining steps. If it is NOT in warranty, please refer to our Repair & Refurbishment program below and/or our web site: bertucciwatches.com
- Step 2** Determine whether your watch has been abused. If not abused, please follow the remaining steps. If the watch is abused please refer to our Repair & Refurbishment programs and/or our web site.
- Step 3** Please have the battery checked by a local professional jeweler or consider our Battery & Band replacement program in section 10 and our web site. Most malfunctions are simply battery related. If the battery is good, and watch is still not functioning correctly, please follow next Step 4.
- Step 4** Please return the defective watch (just the watch head, remove the band) to the retail dealer or send to us for exchange or repair. Please use the Warranty Form (PDF download available on our web site: bertucciwatches.com) or include a note with the same information.

Send the malfunctioning watch to:

BCS  
c/o Warranty Dept.  
P.O. Box 7920  
Gurnee, IL 60031 USA



QR code to go to our warranty info page on our site from your device.

Please contact us with any questions at 866-665-7327 or email us at askenzo@mhbertucci.com.

## 12 Repair Information:

We offer complete repair service to keep your Bertucci® Watch in top performing condition.

See web site for more information.



**REPAIR SERVICE:** If your watch requires repair service, we can run a diagnostic on the watch to determine the issue and contact you with the repair estimate.

**OUT OF WARRANTY REBURNISHMENT PROGRAM:** Should your watch be out of warranty (more than 3 years old), damaged severely, deemed overly abused, or water damaged as a result of not screwing the crown down or pushing in, we offer our refurbishment program. The way it works is as follows – Send us your out of warranty or damaged watch (remove the band) to the BCS address, in section 9, c/o Refurbishment Dept., You will receive:

- refurbished, re-certified and cleaned watch head.
- new band
- new battery
- 1 year warranty

Note: You may not get your exact watch back, but of equal or better condition, if original watch can not be repaired.

## 15 Contact Information:

@ askenzo@mhbertucci.com

866-665-7327

www.bertucciwatches.com

www.ultimatefieldwatch.com

## 7 Replacement Bands Available:

Genuine U.S. Patented Bertucci® Watch Bands are available in a variety of materials and design types. For a full array of replacement bands and for more information go to the REPLACEMENT BANDS page on our web sites: bertucciwatches.com or tridurawatchband.com



NYLON



LEATHER



TRIDURA™

Bertucci® watches feature a quick tool-less band change. Your watch can be fitted with multiple material types & colors.

## Replacement Band Sizing Matrix:

Case Type:	5" - 17mm	3" - 19mm	7" - 22mm	1" - 26mm
M-1	●			
A-1		●		
A-2			●	
A-3			●	
A-4				●
A-5				●
B-1			●	
C-1		●		
D-1			●	

## 10 Battery Information:

Bertucci® watches use environmentally friendly mercury free batteries. Batteries should be replaced by a professional jeweler or use the Bertucci® Battery & Band™ replacement program listed below... which offers an outstanding value on a new battery & band for your Bertucci® Watch. Please visit our web site bertucciwatches.com for more information. Do not attempt to remove the case back as it requires special tools and skills. Proper replacement of batteries is critical to ensure the long life of your Bertucci® Watch. Actual battery life may vary based on environmental factors, normal battery variance, and usage pattern.

**BATTERY & BAND™ SERVICE:** Send your watch (remove the band) in to our service center and we will perform the battery and o-ring replacement and/or lubrication, clean and test the watch, and send it back to you with the new band of your choice at a special price.



## 11 Register Your Watch:

See web site to register your watch.

## 13 Thank You!

Thank you for wearing a Bertucci® Performance Watch.™ You've made an excellent choice. You'll be pleased with your Bertucci® watch for years to come. Please retain this manual for future reference.

## 14 Face Every Minute® In The Field With Bertucci®

We would like to hear from you, so please send us your stories, testimonials, adventures, or experiences you've had wearing your Bertucci® Watch.

Please let us know of any questions or comments you may have.

Send to: askenzo@mhbertucci.com



© 2017 MH BERTUCCI®, INC.  
ALL RIGHTS RESERVED  
PRINTED IN THE U.S.A.

rev.10 8/2017

Bertucci®, MH Bertucci®, DX3®, Durability By Design®, How Good Are You® and Face Every Minute® are registered trademarks of MH Bertucci®, Inc. Bertucci® Performance Watches™ and Promise of Performance™ are trademarks of MH Bertucci®, Inc.

(over)